

Company Profile

Overview

Cockburn Electrical Company (CEC) is a medium sized electrical contractor, which has been operating since 1976. Over those 40 years, the company has accumulated an extensive and loyal client base in a diverse range of industries.

We are based in Bibra Lake and operate from a modern purpose-built 450m² workshop with 268m² air-conditioned offices.

Our stable workforce comprises electrical tradesmen and apprentices, electronic engineers, mechanical fitter as well as administration and management staff. We operate over 30 specialised vehicles and employ GPS location management.

Our areas of expertise are wide-ranging and include the following market segments:

- Industrial
- Commercial
- Defence
- Health and Education
- Mining, Oil & Gas
- Energy management – Voltage Optimisation
- HV\MV\LV Transformers, substations and kiosks

Our specialist services include:

- Installation projects: transportable accommodation; high-rise developments; schools; mixed-use developments
- Electrical and mechanical preventative maintenance
- Breakdown service
- Test & Tag
- Energy management systems - Voltage optimisation
- Building Management Systems
- Industrial controls and electronics
- HV\MV\LV Transformers, substations and kiosks

Electrical Installations

- Complete power, lighting and control systems for factories and units (including manufacturing C/T metered switchboards and associated switchgear);
- Major Defence infrastructure projects and service contracts;
- Building energy efficiency through the use of Voltage Optimisation; saving up to 26% of total building electrical power costs;
- Electrical services installation for mixed use commercial/luxury apartment developments; including MATV, security & access, fire detection, communications and data backbone systems;
- Electrical power and lighting installation for transportable mine accommodation and services buildings for Brockman, Yandi and Gorgon.

- Manufacture and installation of control systems and cabling to process machinery
- Installation of voltage optimisation systems for our sister company Power Intelligence www.powerintelligence.com.au



250kVA Voltage Optimisation unit with bypass switch

- Installation of HV\MV\LV transformers, substations and kiosks



11kV\415VAC Kiosk with RMU & LV Switchgear

- HV & LV Switchgear testing and maintenance

- Installation of Australian Defence Force smart metering, to allow energy analysis and usage across defence sites in Western Australia.



Multiple smart meter installation

Electrical Service, Maintenance & Breakdown

We provide the following services:

- Electrical routine preventative maintenance
- 24 hour breakdown service
- Design and manufacture
- Industrial controls and electronics

We act as the formal and informal service agent for several Companies / Manufacturers who use our services to maintain their machinery, both under warranty and outside the warranty periods. This equipment needs a high level of Electronic, Electrical, and Mechanical skill, which our workforce can provide.

Typical clients are:

- Australian Defence Force
- Office and warehouse buildings
- Western Power
- Cold storage facilities
- Crematoriums
- Logistics warehouses
- Tyre process factories

- Fertiliser manufactures

Building Management, Energy Management & Control Systems

CEC has over 40 years' experience in Building Management, Energy Management and industrial control systems.

Through our sister company, Power Intelligence, we can offer our Australian designed and manufactured voltage optimisation system. Our voltage optimisation systems significantly reduce your building electrical energy costs; this can range typically from 10-15% of the total electricity bill.

Within the CEC control systems department, we can offer control systems to provide:

- Building Management
- HVAC control and monitoring
- Energy monitoring
- Industrial control and monitoring
- Ship management systems

Mechanical Service & Repairs

Our mechanical workshop is able to complete work to a high standard carrying out preventative maintenance, repairs and refurbishments:

- Machining on our 2 metre centre lathe and milling machine
- Fitting work including gearbox, clutch and brake
- Guillotine blade rotation and replacement
- Repairs to overhead cranes and pumps
- Hydraulic and pneumatic fault finding and repairs



Occupational Health & Safety

CEC operates Workplace Health and Safety system specifically designed for the electrical contracting business and the following OHS tiers comply with the Act and regulations:

- OH&S Policy
- OH&S Manual
- Job Hazard Analysis
- Work Method Statements (25 electrical contracting specific procedures)

Quality Assurance

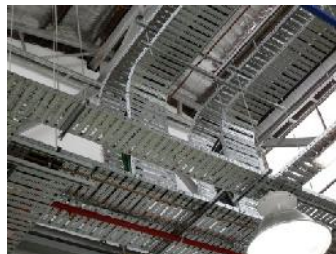
CEC implement detailed procedures, third tier work instructions as well as installation, test and commissioning processes. Assurance is strengthened by detailed project and contract management procedures.

National Code of Practice for the Construction Industry

CEC is compliant with the National Code and has approval of its employment contracts by the Department of Employment and Workplace Relations. From our extensive experience of contract work for the Department of Defence, the company is fully conversant with the National Code as it is a prerequisite of contract award.

Selected Recent Project Experience

- Transportable Accommodation Units for Construction and Operational Camps:
 - “Gorgon” – 160 complex kitchen/dining and admin. chassis, circa \$8m;
 - “Brockman 4” – 250 chassis, circa \$2.5m;
 - “Yandi” – 400 chassis, circa \$3m;
- Australian Defence Force, Fleet Base West: replace street lights, circa \$600,000;
- Australian Defence Force, Special Air Service Regiment: combat range lighting control system, circa \$900,000;
- Australian Defence Force, RAAF Base: Upgrade hangar lighting, circa \$1.4m;



- Australian Defence Force, Fleet Base West: 11kV\415V transformer kiosk and installation, circa \$225,000;

- Office and industrial building electrical fit out, Jandakot, circa \$150,000;



- Niche/Oostveen Construction: two new construction secondary schools (nine buildings), Wattle Grove, circa \$1.9m;
- Savills: Southern Steel, office & industrial building electrical and communications fit out, circa \$800,000:



- Consortium Builders: school electric wiring upgrade, data communications, fire and security.
- Western Power: installation of Voltage Optimisation units for strategic logistics depots.



- Australian Defence Force: installation of 4,500 RCBO and testing of 10,000+ RCD\RCBO

Maintenance & Breakdown

CEC's pedigree of maintenance and breakdown support is highlighted in the list of prestige clients below:

- Transfield – Australian Defence Force
- Spotless – Australian Defence Force
- Western Power
- Leighton's Construction
- ATO
- Santa Maria School
- Little Sisters of the Poor – Aged housing
- City of Fremantle Council
- City of Cockburn Council
- City of Armadale Council
- City of Gosnells
- Defence Housing Association
- Swire Coldstorage
- Sealanes Coldstorage
- Baileys
- Fremantle Cemetery

Representing & Supporting Specialist Manufacturers

- | | |
|----------------------|---------------------------------------|
| • Power Intelligence | Voltage Optimisation |
| • Bremner Glass | Glass Processing Machinery |
| • ESAB | CNC Profile and Plasma Cutters |
| • Austeng | Automated Crematorium Equipment |
| • Telemecanique | Variable Speed Drives & Soft Starters |
| • Kasto & Behringer | Steel Cutting Saws |
| • Nokian & ABB | Power Capacitors |
| • ABB: | Air Circuit Breaker Service |
| • Festo Pty Ltd | Pneumatics control system integrator |